

KEW Windows for KEW3128

Installation Manual



This manual contains instructions how to install the software “KEW Windows for KEW3128” supplied with KEW3128.

1. Introduction

- **Interface**
This instrument is equipped with a USB interface.
Communication method : USB Ver1.1
Following can be done by USB communication.
* Downloading files in the internal memory of the instrument to a PC.
* Making settings for the instrument via a PC
* Displaying the measured results on a PC as graphs in real-time, and also saving the measured data at the same time.
- **System Requirements**
 - OS (Operation System)
Windows2000/XP/Vista (CPU : Pentium III 800MHz or more)
 - Memory
256Mbyte or more
 - Display
1024 x 768 dots, 65536 colors or more
 - HDD (Hard-disk space required)
100Mbyte or more
 - .NET Framework (2.0 or more)
- **Trademark**
 - Windows® is a registered trademark of Microsoft in the United States.
 - Pentium is a registered trademark of Intel in the United States.

The latest software is available for download from our homepage.
<http://www.kew-ltd.co.jp>

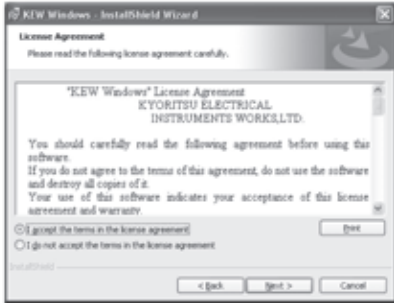
2. Installation of “KEW Windows for KEW3128” Software

- (1) Followings shall be checked before installing the software.
 - To prepare your system to install this software, please close all open programs.
 - Be sure NOT to connect the instrument with a USB until install is completed.
 - Installation shall be done with Administrative right.
- (2) Insert the CD-ROM “KEW Windows for KEW3128” in your PC's CD-ROM Drive. Then, the installer sets up automatically. When it doesn't run automatically, double click the “KEWLauncher.exe”.

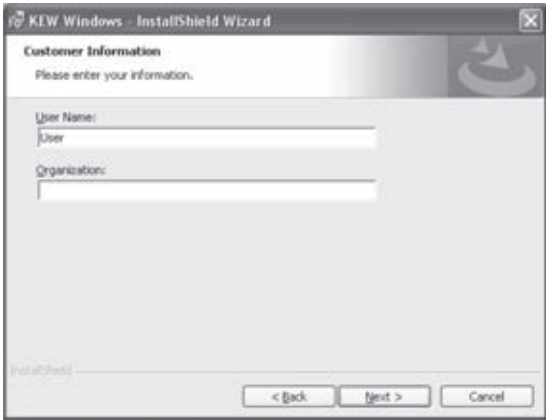
Click “Next” when following window appears.



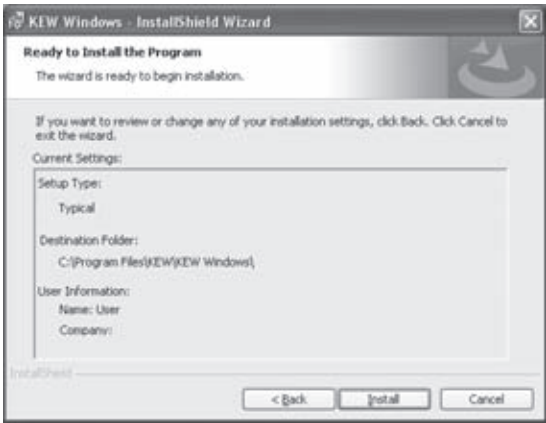
- (3) Read through and understand the License Agreement and click “I accept...”, and then click “Next”.



- (4) Click “Next” after entering the user information and specifying an install destination.



- (5) Confirm the information on install, and then click “Install” to start installing.



- (6) Install is completed when the wizard finishes. Click “Finish”.



- (7) The installation of “KEW Windows for KEW3128” starts when the “KEW Windows” is installed successfully.



- (8) Repeat above step (3) through (6) to install the “KEW Windows for KEW 3128”.

How to un-install the PC Software:
Access to the “Control Panel” in the Start Menu at the lower left on the Windows screen, and double click on the “Add/Remove Programs” to remove the “KEW Windows” and “KEW Windows for KEW3128”.

3. USB Driver Installation

3-1 USB Driver Installation

- (1) Connect one end of a USB cord to your PC.
- (2) After connecting them properly, following balloon appears and install starts.



* A balloon shown below appears after following steps (3) and (4) complete. Step (3) and (4) will be repeated twice.



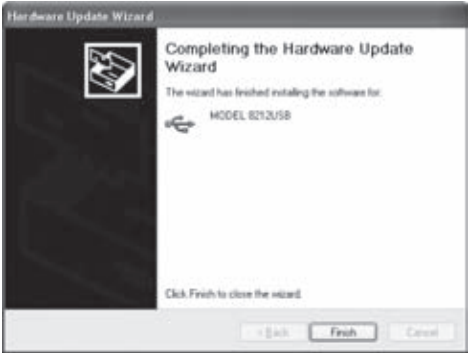
- (3) Click “Install the software automatically (recommended)”, and insert the “KEW Windows for KEW3128” CD-ROM in your PC's CD-ROM drive. Then click “Next”.



In case that following window appears on Windows XP, click “Continue anyway”. (It is an operation check, and no problem happens if install is continued.)



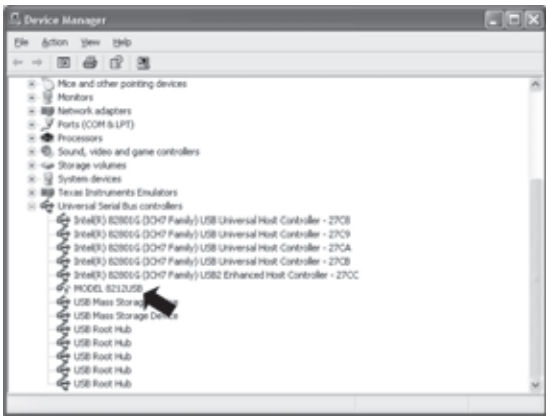
- (4) Install is completed when the wizard finishes. Click “Finish”.



3-2 USB Driver Un-installation

When install of the USB driver is interrupted and reinstall cannot be done, follow the procedure below and delete the existing driver, and then install it again.

- (1) Connect a PC and the instrument with a USB cord.
- (2) Click the “Control Panel” in the Start menu.
- (3) Click “System” in the Control panel.
- (4) Then click “Device Manager”.
- (5) **Right click** on “MODEL 8212USB” in the USB Controller.
- (6) Click “Uninstall” to uninstall the USB driver.



- (7) Remove the USB cord connecting your PC and the instrument once, and connect them again.
- (8) When “Found New Hardware Wizard” window appears, follow the procedures described at “USB Driver Installation” and install the driver.

4. Start of “KEW Windows for KEW3128”

Start the software by; 1) clicking the icon for “KEW Windows” on the desktop, or 2) clicking “Start” -> “Program” -> “KEW” -> “KEW Windows”.

Then the Main Window of “KEW Windows” appears. Select the “KEW3128” and click “Next” or double-click on the “KEW3128” to start the software. Clicking “Exit” or “x” box at the upper right of the window quits the program.



Further detailed information is given in the **HELP**.

KYORITSU ELECTRICAL INSTRUMENTS WORKS, LTD.
No.5-20,Nakane 2-chome, Meguro-ku, Tokyo, 152-0031 Japan
Phone: +81-3-3723-0131
Fax: +81-3-3723-0152
Factory: Ehime
www.kew-ltd.co.jp